



Highly-Capable

- Temperature
- Relative Humidity
- Spectrometer (350-800nm)
- Color Temperature
- Lux
- Equiv. Melanopic Lux (EML)
- Flicker (Percentage, Index, Frequency, SVM)
- Motion

Highly-Integrated

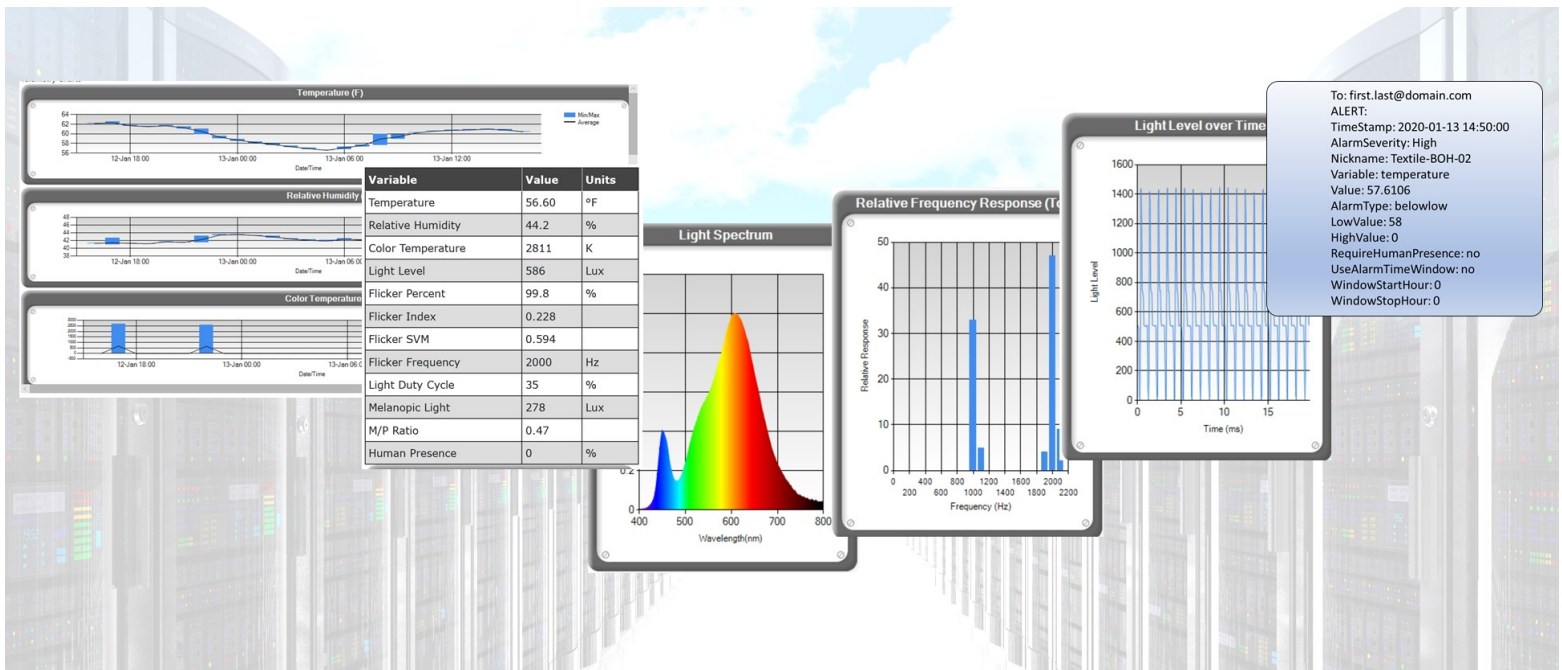
- Direct-to-Cloud (no infrastructure required)
- 100% Azure-integrated
- Secure Azure AD logins
- Access from any device
- Battery + Cellular options provide “ZeroIT” configurations

IoT Environmental Monitoring Applications

WELL/LEED Certification
 Collections Care
 Wellbeing Research
 Good Mfg Practices

Flicker Monitoring
 Circadian Research
 Grow Analytics
 Remote Meter

Cloud App = Real-Time Data, Trending, and Smart-Alerts on Any Device



Specifications

Item	Specification
Temperature Sensor Accuracy	± 0.2°C typical
Relative Humidity Sensor Accuracy	± 2% typical
Lux Sensor	0 – 200K, ± 2% typical
Flicker Capability	Percent, Index, Dominant Frequency, SVM 5 – 200K Lux, 3 – 3000 Hz
Spectral Range	350 to 800nm
Spectral Resolution (FWHM)	12nm typ.
CCT Range	2K – 10K ± 5%
CCT Lux Range	10 – 1500 Lux* (3K to 4K CCT)
Melanopic Lux, M/P Ratio	Per Lucas et al 2014
Motion Sensing	Standard (body) and slight (head) up to 3M

*IRIS HLS-OD1 increases 3K CCT Lux range to 100 - 12k Lux

Models

Model	Description
IRIS ENV-FP	Iris Environmental Monitor (all sensors), Flex Power (Wall, AA Battery)
IRIS ENV-WM	Iris Environmental Monitor, Wall Mount
IRIS ENV-FP1 Audit	Iris Environmental Monitor, Tri-Pod, AA Battery Holder (rentals available with cellular hot-spot)
IRIS RHTL-FP	Iris RH, Temperature, Light (Lux, Flicker), Flex Power (Wall, AA Battery)
IRIS RHTL-WM	Iris RH, Temperature, Light (Lux, Flicker), Wall Mount
IRIS RHT-FP	Iris RH, Temperature, Flex Power (Wall, AA Battery)
IRIS RHT-WM	Iris RH, Temperature, Wall Mount

IoT Service Plan

Tier	Data Download	Trend Charting	Smart Alerts	Live Data Pull	Data History	Collection Interval	Self RHT Cal
STANDARD	Yes	Yes	Yes	Yes	1 Year	Variable (1 min+)	Yes